



Spiracle Technology Gas Supply Valves

Spiracle Technology's OX-series "Gas Supply Valves" provide a 100% source gas for multiple device applications. Spiracle's Gas Supply Valves are designed and sold as components to integrate into medical device assemblies and applications. These finished device applications range from CO₂ flush devices to pulmonary testing machines to transport and critical care ventilators. The possibilities are enormous with this configurable and adjustable fully pneumatic gas supply valve.

It's proven design, quick response times, sensitivity and flow range makes the OX-series Gas Supply Valves a perfect component to incorporate into a medical device assembly.

Baseline / General Specifications

Materials:	Body-Polyester, Internal Parts- Polyester, stainless steel, brass, aluminum, silicone rubber. Non-ferrous metal configurations available.
Supply Pressure:	50 psig nominal (can be run at other psi)
Crack Pressure:	Nominal is 10 LPM flow @ 2 cm H ₂ O (can configure more sensitive)
Valve Trigger Point:	Multiple locations w/ both positive & negative pressures.
Maximum Flow:	Nominal 170 LPM (can be higher)
Inlet Gas:	Nominal is Oxygen (others could be used)
Smallest Footprint:	1.89 diameter x 1.27 inches tall (4.8cm x 3.2cm)
Weight:	1.9 oz (.053 kg), lightest current config.
Operating Temp:	-30° to 125° F (-34° to 52° C)
Storage Temp:	-40° to 160° F (-40° to 71° C)

- Units manufactured in FDA registered and ISO 13485 certified facility.
- Units are U.S.A. made and of U.S.A. origin.
- Manufacturing gas supply valves since 1995

***NOTICE:** Gas Supply Valves are sold as "components" to be used in other manufacturing. Valves are not to be sold/used as stand alone devices unless authorized by Spiracle Technology.

 **Spiracle Technology**

by AuraVent, U.S.A.

10601 Calle Lee, #190

Los Alamitos, CA 90720-2524

Phone: (714) 418-1091 • Fax: (714) 418-1095

e-mail: info@spiracle.com • www.spiracle.com

High Flow Oxygen Conserver



HFOC™ High Flow Oxygen Conserver

Spiracle Technology HFOC High Flow Oxygen Conservers provide emergency care professionals, hospital respiratory care practitioners and anesthesiologists with an affordably priced oxygen delivery system for the most popular brands of bag resuscitators.

Now, it is possible to conserve the gaseous oxygen supply during high flow oxygen applications and provide 100% oxygen during bag valve resuscitation. With the HFOC High Flow Oxygen Conserver, you can deliver clinically sufficient levels of oxygen to the airway while conserving as much as two-thirds of the gaseous oxygen supply. Conserving your oxygen supply is both financially and clinically beneficial. The Spiracle Technology Flow Oxygen Conserver addresses the need to deliver 100% oxygen during resuscitation and performs the function regardless of resuscitator rate and bag stroke volume.

The lightweight, HFOC High Flow Oxygen Conserver operates from any standard 50 psi gaseous oxygen supply source. The quality designed device has an integral back pressure relief diaphragm which functions to relieve pressure greater than atmospheric. Adapters are available to attach the HFOC to the most popular brands of bag valve resuscitators.

 **Spiracle Technology**
by AuraVent, U.S.A.

* Manufactured in the United States of America

Pulmonary Resuscitation

10 Good Reasons To Use Spiracle Technology HFOC™ High Flow Oxygen Conservor

Affordably Priced - The reusable HFOC eliminates the need to use costly single patient use disposable oxygen reservoirs and accumulators.

Oxygen Supply Conservation - Approximately two-thirds of the time the oxygen supply is wasted filling accumulators and reservoirs in an attempt to deliver the highest possible oxygen concentration during bag valve resuscitation. Now you can conserve your gas supply, which is especially beneficial when transporting with small oxygen cylinders.

100% Oxygen Delivery - It is now possible to address the American Heart Association guidelines by delivering 100% oxygen, a task not possible with oxygen reservoirs and accumulators.

Easy To Use Automatic Operation - Attach the HFOC to a 50 psi oxygen source, and each time you release the resuscitation bag the HFOC is automatically activated. Then, it automatically and quickly terminates it's operation when ambient pressure in the bag is sensed.

Safe To Use - An integral back pressure relief diaphragm in the HFOC does not allow pressure to rise above ambient in the breathing circuit. The friction fit adapters firmly secure the HFOC to your resuscitator, eliminating reservoir, accumulator and oxygen connecting hose disconnection during transport and resuscitation procedures.

High Flow Oxygen - The HFOC is designed to deliver gas flow over 160 lpm making it possible to deliver 100% oxygen regardless of resuscitator rate and bag stroke volume.

Easy To Clean - The durable valox material can be quickly and easily wiped clean with soap and water or alcohol.

Lightweight - With the extensive amounts of equipment carried today by health care providers, the compact and lightweight HFOC weighs only 270 grams.

Conformance to Standards - The OX-series Inhalator conforms to ASTM standards for Connectors, Operational and Performance requirements.

Versatile - Resuscitation bag adapters are available to fit the most popular brands and models of bag valve mask resuscitators and are ideal for crash cart storage and multiple department use.



HFOC connected to the refill side of a standard bag valve mask resuscitator

WARNING: This device is not a resuscitator. It is not intended for use as an inhalator. This device should be used solely as an accessory with a bag valve resuscitator.

How To Specify & Order Spiracle Technology HFOC™ High Flow Oxygen Conservors

HFOC w/Hose Model No. 301
w/15/22mm I.D./O.D. adapter
w/23/28mm I.D./O.D. adapter
w/26/31mm I.D./O.D. adapter

HFOC w/Hose w/NPB PMR-II adapters
 Model No. 301-10

Adapter Pack NPB PMR-II adult/child/infant - 2 adapters
 Model No. 2522006

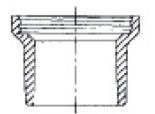
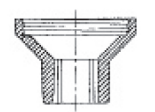
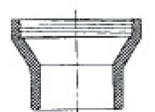

Adapter Pack 15/22 23/28 26/31 m.m. I.D./O.D. - 3 adapters
 Model No. 2522005

CAUTION: Federal law restricts this device to sale by or on the order of a physician.

SPECIFICATIONS

Maximum Flow:	Nominal 160 liters per minute
Inlet Pressure:	40-90 psi
Pressure Trigger:	0 to 0.5 cm H ₂ O
Pressure Relief:	Ambient pressure conditions
Adapter Sizes:	15mm I.D./22 mm O.D. (internal ribbed) 23mm I.D./28 mm O.D. 26mm I.D./31 mm O.D.
Materials:	Valox 508 polyester, steel, nickel plated brass and aluminum fasteners.

HFOC Resuscitator Adapters

	P/N 2522002	26/31 mm I.D./O.D. adapter
	P/N 2522003	15/22 mm I.D./O.D. internal ribbed adapter
	P/N 2522004	23/28 mm I.D./O.D. adapter
	P/N 2522007	NPB PMR-II* adult adapter
	P/N 2522012	22mm I.D. silicone coupler

 **Spiracle Technology**
 by AuraVent, U.S.A.

10601 Calle Lee #190
 Los Alamitos, CA 90720
 Phone: 714.418.1091 • Fax: 714.418.1095
 e-mail: info@spiracle.com • www.spiracle.com

OX-series Inhalator



OX-series Inhalator

Spiracle Technology OX-series Inhalators provide 100% source gas to the breathing patient with minimal respiratory effort. The new exhalation diaphragm and housing have been engineered to reduce expiratory resistance. The OX-series Inhalator's compact and lightweight design weighs only 3 ounces (87 grams). The Valox 508 polyester material resists corrosion reducing the chance for product failure and increasing product life. Significant improvements to response times, sensitivity and flow make the OX-series Inhalator the valve of choice for spontaneously breathing patients requiring 100% source gas.

The OX-series Inhalator has been designed to work under ideal conditions or in the harshest environments. The OX-series Inhalator is a dependable source for the delivery of oxygen to spontaneous breathing victims of aquatic injuries, dive accidents, smoke inhalation and carbon monoxide poisoning. Respiratory care departments, dental anesthesiology, off shore drilling rigs and remote dive locations are ideal for the OX-series Inhalator.

The durable OX-series Inhalator operates from a standard 50 psi gaseous oxygen source.

 **Spiracle Technology**
by AuraVent, U.S.A.

Oxygen Administration

10 Good Reasons To Use Spiracle Technology OX-series Inhalator

Affordably Priced - The OX-series Inhalator is the most economical means to ventilate your spontaneously breathing patient

Easy to Use - Standard hose connections allow the operator to quickly attach the unit to a 50 psi gas source. Conformance to ASTM standards ensures quick and proper valve mask connections.

100% Oxygen Delivery - With the OX-series Inhalator 100% source gas can be delivered to the patient.

Work Of Breathing - The OX-series Inhalator can achieve flow rates over 160 Liters per minute with minimal patient effort.

Inspiratory Resistance - The enhanced OX-series outlet adapter and I:E valve result in a decrease in inspiratory resistance when compared to other inhalators.

Expiratory Resistance - The enhanced OX-series outlet adapter and I:E valve result in a decrease in expiratory resistance when compared to other inhalators.

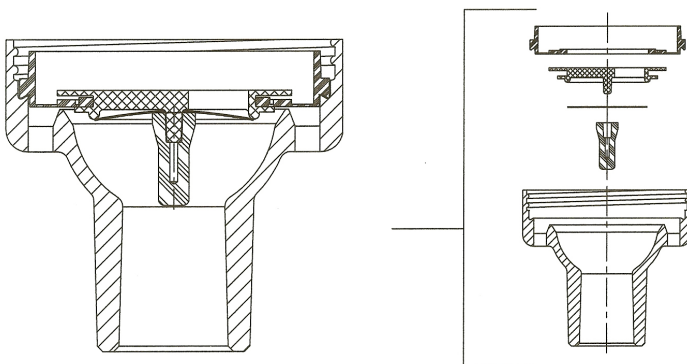
Compatible I:E valve - The enhanced OX-series I:E valve and housing are compatible with certain older demand inhalators and manually triggered demand valves. The flow resistance characteristics of the I:E valve and housing may improve their performance

Conformance to Standards - The OX-series Inhalator conforms to ASTM standards for Connectors, Operational and Performance requirements.

Environmental Conditions - The OX-series Inhalator is designed to work under the harshest conditions. Durable materials are used in the construction to stand up to corrosion.

Easy to Clean - The durable Valox™ housing material can be quickly wiped clean with a mild soap solution.

CAUTION: Federal law restricts this device to sale by or on the order of a physician.



How To Specify And Order Spiracle Technology OX-series Inhalator

Ox-series Inhalator
Model No. 302

Ox-series Inhalator, and six (6)
foot oxygen supply hose.

Ox-series Inhalator
Model No. 302-10

Ox-series Inhalator, six (6) foot
oxygen supply hose assembly
and single patient use adult
mask.

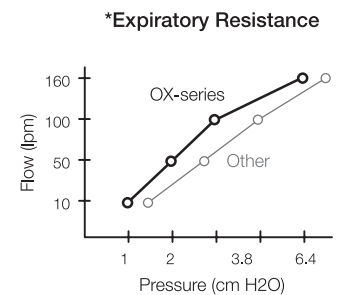
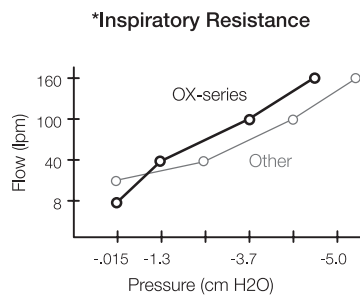
Inhalation/Exhalation
Valve Assembly
Model No. S190014
Coupler
Model No. 2522005

Inhalation/Exhalation valve
assembly

Interface coupler between
OX valve and I/E valve outlet
adapter.

SPECIFICATIONS

Pressure Trigger:	< -2.0 cm H ₂ O
Inspiratory Resistance: @ 100 LPM	-3.2 cm H ₂ O
Expiratory Resistance: @ 100 LPM	3.8 cm H ₂ O
Gas Flow:	0-160 lpm @ 40 psig
Flow Termination:	≥ Ambient Pressure
Operating Temperature:	-30° to 125° F (-34° to 52° C)
Storage Temperature:	-40° to 160° F (-40° to 71° C)
Inlet Gas Pressure:	40-90 psig
Dimensions:	Diameter: 1.87 in (4.74 cm) Width including inlet: 2.28 in (5.79 cm) Height: 2.79 in (7.08 cm)
Weight:	3 ounces (87 grams) weight w/o O ₂ hose.
Materials:	OX Inhalator body: Valox 508 polyester, stainless steel moving parts and fasteners. Stainless steel, brass and aluminum plated for corrosion resistance.



 **Spiracle Technology**
by AuraVent, U.S.A.

10601 Calle Lee #190 Los Alamitos, CA U.S.A
Phone: 714-418-1091 • Fax: 714-418-1095
e-mail: info@spiracle.com • www.spiracle.com